

FACTORY SOLUTION BROCHURE

Secure people and goods, and maximize the operation efficiency

- Security Management
- Operation Management
- IT Management



FACTORY SOLUTION

INTRODUCTION

Through the years, factory owners have sought to create a fully automated production line. New machines are continually being incorporated into the production process, moving this dream ever closer towards becoming reality. One step in reaching this goal is to enable this assortment of machines to intelligently communicate information with one another. Ricoh's video based solution is the next leap forward. Our sophisticated video based system can integrate with a wide variety of devices and provide you with real time updates on the overall health of your facility. Experience the future today with Ricoh's integrated security and operations management solutions.



RICOH
imagine. change.

CONTENTS

Security Management	02
Operation Management	
IT Management	
Map-Based Central Management	03
Remote Monitoring from Mobile Device	
Ricoh Unified Solution	04
Solution Architectures	05

SECURITY MANAGEMENT

Protect your people and your products

Vandalism and Theft Protection



If someone is trying to gain access to the factory to steal or vandalize, Ricoh's surveillance system can detect the intrusion and alert the appropriate authorities. For added security, connect alarms or lights to the camera and they can be activated upon motion detection.

Unauthorized Access Prevention by Access Control Integration



Factories have access control ensuring that only specific people are allowed to enter an area. However, can access control alone know whether the identity shown in the entry log matches the accessing person? Access control integrated with surveillance system can help you faster control an incident of identity fraud by simultaneously providing video proof and an entry log for verification.



When someone is entering the facility, the access control system will record only this entry - it alone is not capable of noticing people who tail behind and gain entry without any access card. Ricoh's surveillance system can detect such incidents and alert the control center.

Camera Tampering Detection



Camera manipulations such as covering the lens or redirection can be detected and a notification can be immediately sent to the control center.

OPERATION MANAGEMENT

Improve operation efficiency with Ricoh video intelligence and device interoperability

Warehouse Traffic Optimization



Optimize traffic flows by identifying congestion in aisles through our heat map technology and relocating some products to areas with less traffic.

Stock and Shipment Control



Ricoh's object counting can help you ensure the right number of goods removed from aisles and packed for delivery on conveyor belts. Match this real time information with the information logged by your employees. Solve mismatches through video evidence.

Remote Process Control



You've got volatile working conditions? Not a problem. Execute processes and validate by remote triggering through cameras' DO ports. Devices that are connected to Ricoh cameras can be monitored by e-map. Upon device activation, the system keeps a record in a timeline along with the associated video of the device in operation.

Incident Management



Any signal sensor can be connected to our cameras' DI. If the sensor detects a problem such as an unnatural rise in temperature or humidity, it will trigger a signal to the camera and NVR. In playback mode, you'll be able to instantly jump to the video evidence for each specific sensor notification.

Digital Signage



Need an effective way to deliver messages to your team? With Ricoh's media display station, you can transform any monitor into a versatile information board. Display instructions and guidelines for your employees. Broadcast escape routes in the event of disasters or fires.

IT MANAGEMENT

Get smooth and reliable live view and centralize the storage of recorded videos

Guaranteed Retrieval of Recordings



In the event of intentional or accidental damage to the recording server, Ricoh cameras can record evidence directly to SD cards. Once the server is back online, the camera can transmit the recorded data to the NVR, ensuring no loss of evidence.

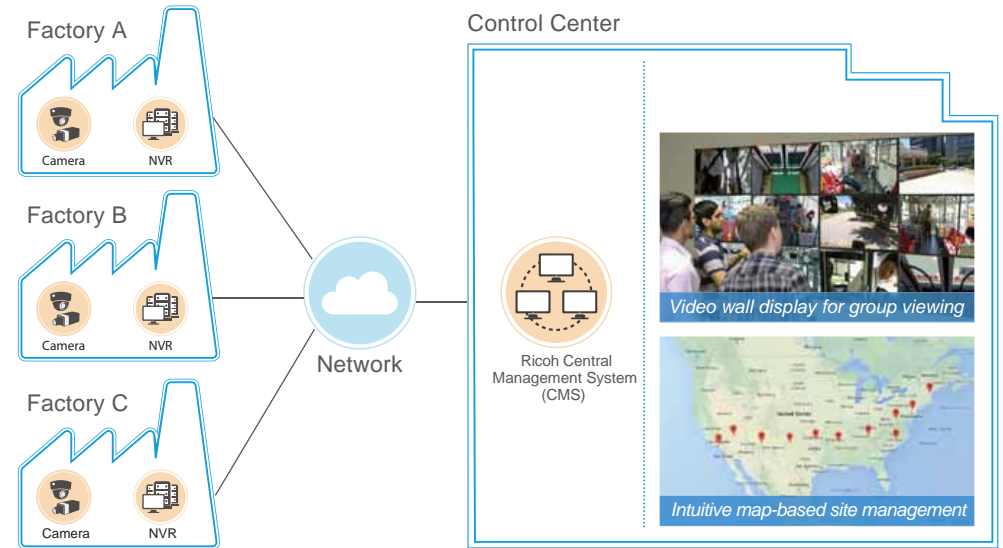
Efficient Live Monitoring



Each factory can locally keep video at highest quality. This data can be transmitted to a headquarters under lower quality settings to save on bandwidth and storage.

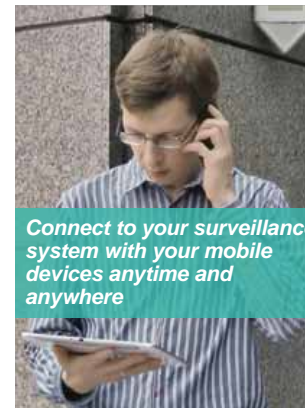
MAP-BASED CENTRAL MANAGEMENT

Conveniently manage all the factories in a control center



REMOTE MONITORING FROM MOBILE DEVICE

Monitor your factory wherever you are



See Live View



Watch Playback



Control PTZ Cam



Take Snapshots



RICOH UNIFIED SOLUTION

Cameras • NVRs • IVS • CMS • Client Applications

Cameras



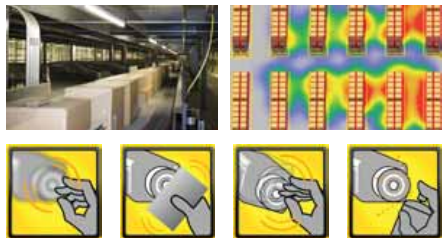
- Up to 12 megapixel resolution
- Various camera types for different applications
- Super wide angle lens or fisheye lens
- Local storage for recording back-up
- Clear videos with details in any lighting condition
- Surveillance both in daytime and nighttime
- Digital input and output
- Weatherproof, vandal proof and vibration proof

Network Video Recorders (NVR)



- Up to 200 channels of cameras supported
- High definition live view with preferable layouts
- Simple and fast search for recorded videos
- Recording based on custom schedules or events
- Optimal reliability with redundancy system

Intelligent Video Surveillance (IVS)



- Smart algorithms to detect and identify various scenarios
- Heat map to identify traffic congestion in the warehouse
- Camera tampering detection to stop any ongoing crime

Central Management System (CMS)



- Unlimited cameras and NVRs supported
- Map-based site management
- Single control center to manage and monitor multiple sites
- Video wall display for group viewing

Client Applications

- Media Display Station -



- Displaying videos or slide shows on signage channels through paired software Digital Signage Station 1
- HDMI output with 1080p resolution
- Easy installation with surface, VESA and pole mounts

- Mobile Client -



- Both iOS and Android supported
- Live monitoring from everywhere with mobile devices
- Access to multiple devices, including cameras, NVRs and CMS servers
- PTZ camera control and snapshot

- Workstation -



- Both Windows and MAC OS systems supported
- User-friendly interface to configure NVR or CMS servers

- Edge Recorder Client -

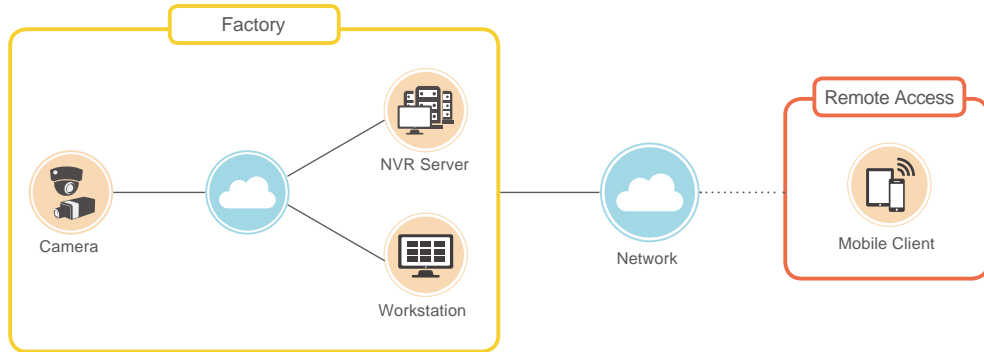


- Windows system supported
- Lite version of NVR system based on camera local storage
- Up to 16 channels of cameras supported

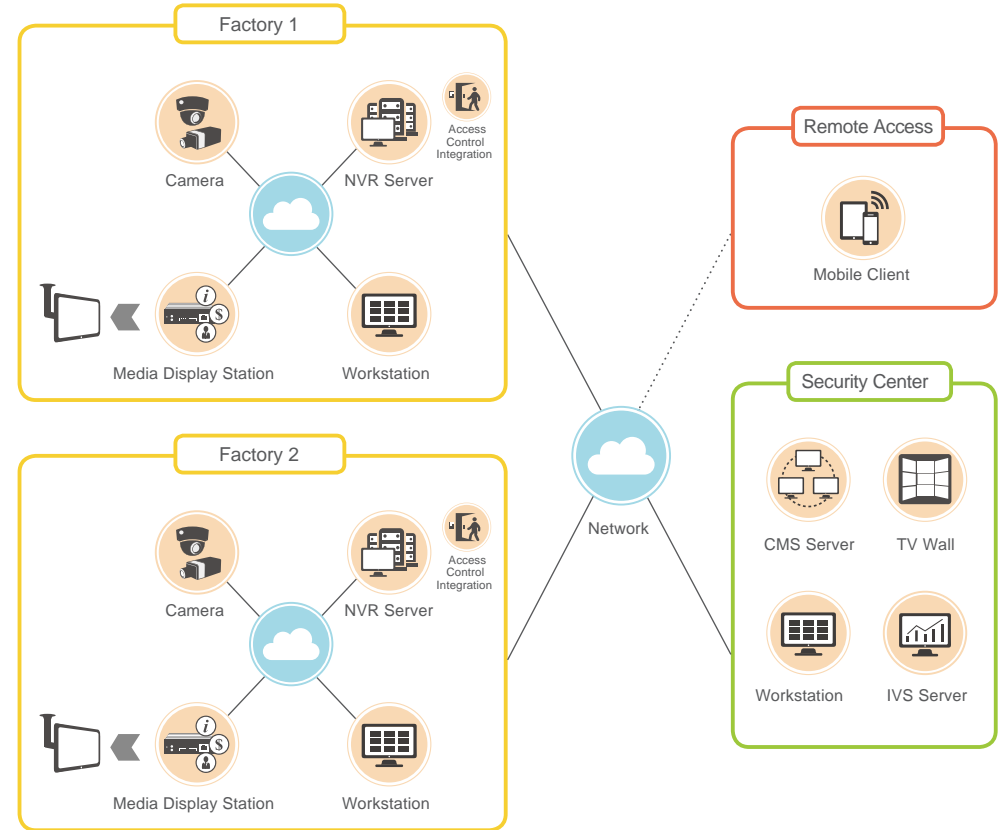
SOLUTION ARCHITECTURES

Satisfy your surveillance needs with flexible solution architectures

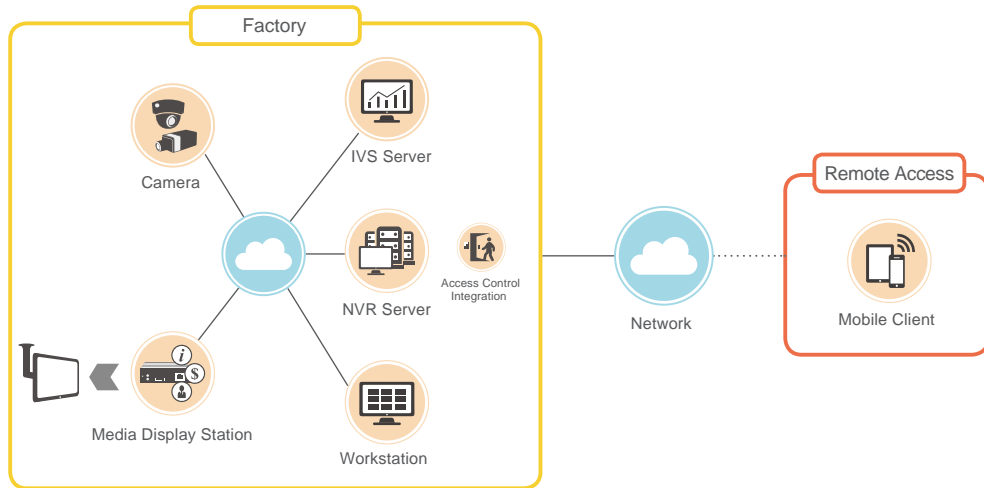
Basic Solution



Complete Solution



Advanced Solution



RICOH, YOUR BEST PARTNER IN FACTORY SECURITY AND MANAGEMENT

As a fast growing solution provider, Ricoh is dedicated to manufacturing state of the art IP video surveillance technology and providing end-to-end turnkey solutions worldwide. As factories across the globe move towards a fully automated production model, Ricoh follows suit with a wide range of products seeking to help push its partners towards achieving this goal. Ricoh cameras can connect with a vast array of sensors capable of detecting environmental changes in heat and humidity to provide more meaningful information to factory owners. Integration with access control provides another layer of protection against vandalism and theft. With intelligent video analytics such as object counting and heat map, Ricoh can even help boost operational efficiency of stock and shipment flows.

Secure your factory and maximize operational efficiency with Ricoh now !

RICOH (MALAYSIA) SDN. BHD. (10078-W)

Lock + Store, Level 1 & 3,
No 5, Jalan Penyair U1/44, Off Jalan Glenmarie,
40150 Shah Alam, Selangor Darul Ehsan.
T 03-5565 3888 F 03-5569 7761 / 03-5569 7760

JB Network Operations Centre .
No 49A, Jalan Harmonium 23/14,
Taman Desa Tebrau, 81100 Johor Bahru,
Johor Darul Takzim.
T 607-3596833 F 607-3596877

Alor Setar	T 04-730 3299	F 04-730 2880
Ipoh	T 05-254 9251	F 05-253 5377
Johor Bahru	T 07-351 8311	F 07-352 3622
Penang	T 04-283 7354	F 04-283 7439
Melaka	T 06-282 7500	F 06-282 8931
Kota Kinabalu	T 088-439 427	F 088-432 845

For more information, please contact :

1300 88 8228
www.ricoh.com.my



RICOH MALAYSIA (Official)



www.ricoh.com.my