

# RICOH TotalFlow® Production Manager v4.3

Production Printing Solutions

**RICOH**  
imagine. change.



Seamless job management, simplified.

# Drive smarter automation to improve quality, speed production and achieve better profitability

Reduced errors. Faster turnarounds. Greater peace of mind.

RICOH TotalFlow® Production Manager turns workflow automation into a competitive advantage for your printing operation by reducing human touchpoints and helping to ensure high-quality work on every page of every run. TotalFlow Production Manager integrates seamlessly into your print environment and supports connections to external programs including MarcomCentral and PrintNet Solutions to offer even greater efficiencies. Designed by Ricoh's expert software development team to capture more value from your printing hardware, Production Manager simplifies workflows to drive better business results from job inception to completion. Help operators achieve greater productivity through intuitive menus and interfaces that are easy to learn and quick to master.

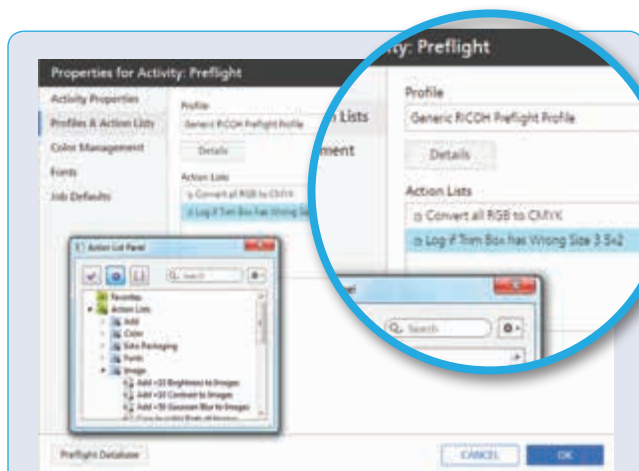
## Automate prepress to ensure quality the first time

Most print projects require a series of similar tasks to be performed on the print file before production. Checking for and correcting crops, sizing, embedded fonts and color formatting is a sizable task that must be completed on every digital file.

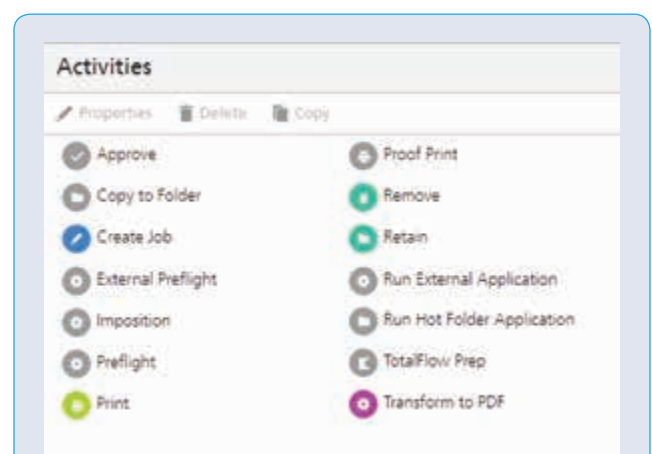
By creating customized workflows with Enfocus PitStop action lists you can automate these tasks, including enhanced preflight and color management, eliminating touchpoints and hours of operator time. Run jobs with the same precision and detail every time. Create workflows once for reduced labor costs for every job.

## Build your own workflows

Nobody knows your print environment better than you do. Use TotalFlow Production Manager to create and customize JDF/JMF workflows to simplify printing. Integrate it with RICOH TotalFlow Prep® to eliminate manual intervention. Create dynamic and automated workflows that can include anything from alerts and approvals to imposition, preflight and job ticketing, just to name a few. Drop-and-drag activities can be configured once, or revised as job requirements change. This eliminates the need to enter print specifications multiple times for similar jobs, and creates seamless printing with no human intervention.



Create a workflow that contains a preflight step that can check or convert color space, embed fonts and correct many file issues automatically.



Labor-intensive tasks can be replaced by activities in a workflow to automate human touch points.

## Centralize your decisions

Use TotalFlow Production Manager to control all of your print tasks centrally. Whether you need to print/convert Postscript and PCL data streams to PDF, or just navigate day-to-day office printing, TotalFlow Production Manager keeps all of your print protocols within one view. Sophisticated reporting includes color and B&W page counting and sheet usage to monitor and enhance operator knowledge and efficiency.

Balance scheduled digital print loads using due date tracking and job scheduling. Visual job tickets allow you to see what the job will look like before you print it, but approval steps and "proof" printing can be added to the process to ensure accuracy.

## Optimize productivity with optional Advanced Imposition, powered by Ultimate Imposition®

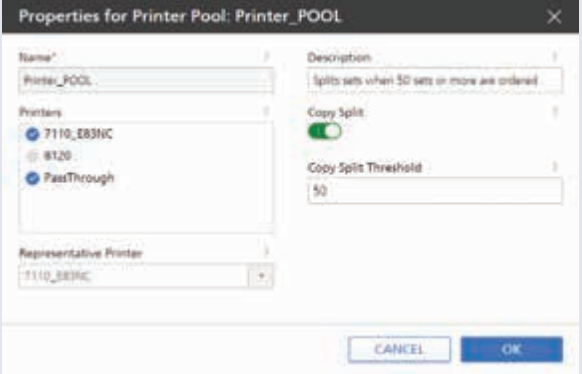
To make the most of your equipment and paper, you often need custom imposition, advanced folding, detailed marks for cutting and barcodes to configure the cutter. With the Advanced Imposition option, all of this is easily defined and automated. Any PDF or EPS can become a custom mark.

Create barcodes with up to 12 specified fields for identifying job characteristics. Templates with combinations of all of these elements can be saved, once again automating processes.

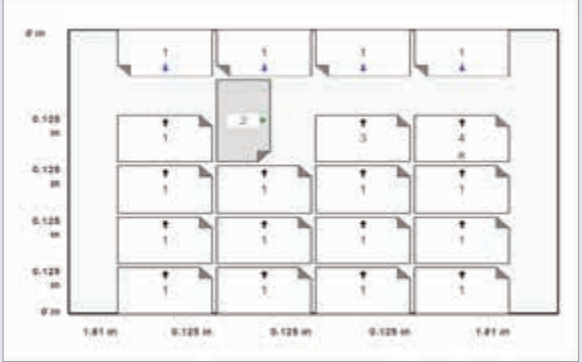
## Capture all printing in house

Production printing involves so many unseen variables such as file formats, print languages and protocols. TotalFlow Production Manager's versatility allows your shop to keep it all in house. Your shop can print Postscript/PCL data streams, use LPR and hot folder submissions, print from native applications using the TotalFlow PDF printer drivers for Mac and PC and submit certain file formats from the browser interface.


Datastreams can also be converted to PDF if job ticketing, reading or archiving is necessary. Those datastream variables can also be mapped to replace tray, paper and finishing commands embedded in the data.



Creating printer pools allows job sets to be split across various print engines drastically minimizing print time.



Versatile templates can be created and used in any combination in a workflow to automate imposition.



Find and replace variables in PS and PCL data streams to automatically control tray calls, paper calls and finishing.

# RICOH TotalFlow Production Manager Key Benefits

- Browser-based application
- Save and reprint jobs
- Support for 5 to 15 printers
- Email notification at the printer and job level
- Balance workloads with printer pools
- Full PDF workflow w/JDF-enabled Fiery Controllers
- Print from native applications using PDF driver for Mac and PC
- Support for connecting to MarcomCentral and PrintNet Solutions applications
- Robust page and media usage reporting
- Job scheduling with due date warning
- Postscript and PCL data stream printing
- Optionally perform Postscript and PCL® to PDF transforms
- EFI™ Fiery® presets and virtual printer features
- Enhanced preflight and color management integration powered by Enfocuss
- Optional Advanced Imposition for barcodes, custom banner sheets with customizable crop, registration and document marks, powered by Ultimate Imposition®

## RICOH TotalFlow Production Manager at a glance

System Requirements	OS	Edition	32 bit (x86)	64 bit (x64)
	Windows® 7 (SP1)	Professional, Enterprise, Ultimate		⊗
	Windows 8.1	Professional, Enterprise		⊗
	Windows 10	Professional, Enterprise		⊗
	Windows Server 2012, plus R2	Standard		⊗
	Windows Server 2016	Standard		⊗
Web Browser (No 64-bit support)	<ul style="list-style-type: none"> <li>• Mozilla Firefox® current version plus two prior</li> <li>• Google Chrome™ current version plus two prior</li> <li>• Microsoft Edge® version 25 and greater</li> </ul>		<ul style="list-style-type: none"> <li>• Internet Explorer® 11</li> <li>• Apple® Safari® 10 and 11</li> </ul>	
Adobe® Reader	<ul style="list-style-type: none"> <li>• Adobe Acrobat® Reader 11 and greater</li> </ul>			
File System	<ul style="list-style-type: none"> <li>• NTFS recommended</li> </ul>			
Client Side	OS	Edition	32 bit (x86)	64 bit (x64)
	Windows 7 (SP1)	Professional, Enterprise, Ultimate	⊗	⊗
	Windows 8 and 8.1	Professional, Enterprise	⊗	⊗
	Windows 10	Professional, Enterprise		⊗
	Windows Server 2012, plus R2	Standard		⊗
	Apple Mac OS® 10.9 and 10.10	Mavericks, Yosemite		⊗
Hardware Specifications				
CPU	<ul style="list-style-type: none"> <li>• 2.4 GHz Dual Core</li> </ul>			
Main Memory	<ul style="list-style-type: none"> <li>• 8 GB</li> </ul>			
Hard Disk	<ul style="list-style-type: none"> <li>• 100 GB free space</li> </ul>			
Network	<ul style="list-style-type: none"> <li>• Ethernet LAN adapter (at least 100 Mbps, wired LAN recommended). TCP/IP protocol (IPv4)</li> </ul>			
Display	<ul style="list-style-type: none"> <li>• More than 1024 x 768 dots, more than 64,000 colors</li> </ul>			

To learn more, contact your Ricoh production print specialist.

**RICOH**  
imagine. change.

RICOH (MALAYSIA) SDN BHD  
Lock + Store, Level 1 & 3, No.5, Jalan Penyair U1/44  
Off Jalan Glenmarie, 40150 Shah Alam,  
Selangor Darul Ehsan, Malaysia.  
Hotline: 1300 88 8228



[www.ricoh.com.my](http://www.ricoh.com.my)