

RICOH
imagine. change.

Standard projector

PJ X5580
PJ WU5570



Contrast ratio
9,000:1

Up to 6,000
lumens

Integral 10W
speakers x 2

HDMI
Connectivity

Auto image
correction

Wired &
Optional
Wireless

Shed more light on your next presentation

You worked hard to craft a smart, compelling message. Now it's time to ensure your audience sees it the same way you do. Choose the RICOH® PJ X5580/PJ WU5570 to showcase every presentation with vibrant colors, brighter lighting and greater contrasts, so everybody in the room can see every line, image and detail clearly — even when you present in difficult ambient lighting. Use this high-end projection system to customize presentations in mid-size conference rooms, training centers, classrooms, auditoriums, exhibition halls and more. Take advantage of multiple connections, DLP technology, flexible installations and managed utilities, so nothing gets between your message and your audience.

Make everything shine brighter

Don't let outside forces affect how your audience sees you and your ideas. Whether you're in a windowless room, spacious auditorium or sun-drenched showroom, you can light up your presentation with up to 6,000 lumens to produce brilliant images with rich, vibrant colors unaffected by ambient lighting. Do your attendees need to take notes? Just leave the room lights on while presenting. Colors stay bright and vivid without washing out on screen and a 9,000:1 contrast ratio delivers clear delineation between light and dark colors, so your text and graphics are crisp and clearly visible for your entire audience — from the first row to the last.



Deliver a clearer message

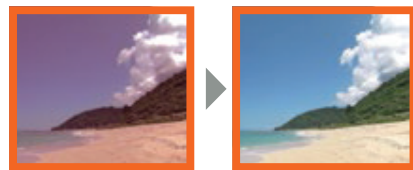
All eyes are on your presentation. Keep them there with high-quality DLP technology for precise images and visuals without lag time. With the PJ X5580, you can showcase action-packed movies, brilliant images, detailed schematics and more in 4:3 aspect ratio as large as 300" diagonally at up to 1024 x 768 dpi (XGA). Use the PJ WU5570 for even more lifelike reproductions in high-definition with 1920 x 1080 dpi (WUXGA) image resolution and 16:10 aspect ratio to captivate your audience and make your presentation more memorable.



Keep the focus on the information

The moment your audience notices a distorted or poorly lit image, they're no longer paying attention to your message. So remove those distractions. The PJ X5580/PJ WU5570 balances itself to reduce distortion. Or, you can make your own adjustments to trapezoidal distortion using a four-point correction function. Color will never be a problem on most surfaces. When projected colors are adjusted, every image pops regardless of the wall color, screen color or blackboard where it's being viewed. With the Keystone Correction Image Adjustment, you can even project on non-traditional objects, such as columns and beams, without losing any of the sharpness or clarity from conventional screenings.

Wall Color Adjustment



Choose the clear choice for high-quality, low-maintenance projection

Connect with more people, more ways

Whether you're sharing financials from a black-and-white spreadsheet or an action-packed car chase from a recent blockbuster, make sure your audience doesn't miss a thing. Use one of the many HDMI connection ports on the PJ X5580/PJ WU5570 to plug in almost any camera, DVD player, computer or other media device and impress your audience with the information they want presented in the format they prefer. The system also comes with powerful, built-in, 10-watt speakers, so audio resonates even in large auditoriums, atriums and conference centers.



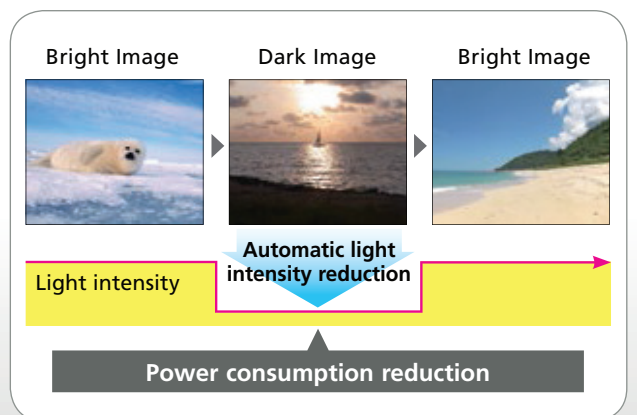
Get your message out quickly

Your audience gathered to see your message, not to see you fumbling with the projector's controls. Mount the PJ X5580/PJ WU5570 so it's always ready to go when you are, without searching for cords or waiting for IT assistance. With on-screen prompts and one-touch remote controls, you can dive right into your presentation with ease, without unnecessary distractions or delays. If you do get stuck, help is right there — even if it's coming from far away. Administrators can use optional management software — including PLink™, and Crestron RoomView® — to check status, adjust settings and even power the unit on or off from a remote location so you can concentrate on your core tasks, including keeping your audience engaged.



Use less energy

Energy can add a jolt to your presentation. But you'll need to provide it — the PJ X5580/PJ WU5570 runs quietly while using less energy in Eco Mode. It starts up and shuts down quickly, without residual noise that can interfere with your discussions. Toggle to Eco Mode to reduce the amount of energy the projection system uses for each image. For example, darker images require less light, so less energy is needed. Plus, Eco Mode extends lamp life expectancy to up to 4,000 hours.



PJ X5580/PJ WU5570

MAIN SPECIFICATIONS

GENERAL

Product Name	PJ X5580	PJ WU5570
Projection system:	DLP	DLP
Resolution:	XGA	WUXGA
Pixel:	1,024 x 768	1,920 x 1,200
Panel:	0.7 inch	0.67 inch
Aspect ratio:	4:3	16:10
Brightness (lm):	6,000	5,500
Contrast ratio (Image Eco Mode):	9,000:1	
Projection screen size:	30" to 300"	
Projection distance:	1 to 13.5 m (from rear of unit to projection surface)	
Throw ratio:	PJ X5580: 1.241-2.222 PJ WU5570: 1.241-2.222	
Lamp:	Mercury lamp	
Lamp life:	Standard: 3,000 hours (365 W) Eco mode 1: 4,000 hours (292 W)	
Zoom ratio:	1.8	
Zoom:	Manual	
Focus:	Manual	
Connection terminal:	Mini D-SUB15pin x 2 (Computer IN) Mini D-SUB15pin x 1 (Monitor OUT) Mini DIN 4pin x 1 (S-Video) RCA_1pin x 1 (Video) D-SUB 9pin x 1 (PC Control) HDMI 1/ MHL in x1 HDMI 2 in x1 Display port x1 3.5 mm mini Jack x1/x2 RCA audio jack (Left/Mono) x1 RCA audio jack (Right) x1	
USB:	Mini USB-B x 1 (firmware upgrade)	
Wired LAN:	RJ-45 x 1 (10BASE-T/100BASE-TX/1000BASE-T)	
Wireless LAN:	LAN IEEE 802.11b/g/n compliant (Option)	
Primary features:	Mute (Blank), Freeze, Re-size (Magnify), Manual keystone (vertical, horizontal), Auto keystone (vertical), Password protection, User logo, Eco mode, 3D ready, Wall Color mode, Kensington lock, Firmware update (USB)	
Built-in speaker:	10 W x 2	
Dimensions (W x D x H):	424 x 356 x 150 mm	
Weight:	6.35 kg	
Power source:	100 - 240 V, 50/60 Hz	

ECOLOGY

Sound power level (full system):	35 dB
Power consumption:	Operating power: 495 W Energy Saver mode: 395 W Stand-by mode: 1 W
Operating temperature:	5°C - 40°C
Operating humidity:	20% - 80%
Storage conditions:	Temperature: -20°C - 60°C Humidity: 20% - 80%

ACCESSORIES

Set-up guide & safety instructions, Read this first / Manual (Starting Guide), RGB cable, Power cable, CD-ROM and manual, Remote control with batteries, Lens cap, Filter (built-in)

CONSUMABLES

Replacement lamp Type 22

For availability of models, options and software, please consult your local Ricoh supplier.

RICOH
imagine. change.

www.ricoh.com.my

RICOH (MALAYSIA) SDN BHD

Lock + Store, Level 1 & 3, No.5, Jalan Penyarir U1/44, Off Jalan Glenmarie, 40150 Shah Alam, Selangor Darul Ehsan, Malaysia
Hotline: 1300 88 8228

All brand and/or product names are trademarks of their respective owners. Specifications and external appearance are subject to change without notice. The colour of the actual product may vary from the colour shown in the brochure. The images in this brochure are not real photographs and slight differences in detail might appear. Copyright © 2015 Ricoh Asia Pacific Pte Ltd. All rights reserved. This brochure, its contents and/or layout may not be modified and/or adapted, copied in part or in whole and/or incorporated into other works without the prior written permission of Ricoh Asia Pacific Pte Ltd.