

UV Flatbed Printer

**RICOH**  
imagine. change.

# RICOH Pro T7210

Print  Copy  Scan  Fax



RICOH  
Pro T7210

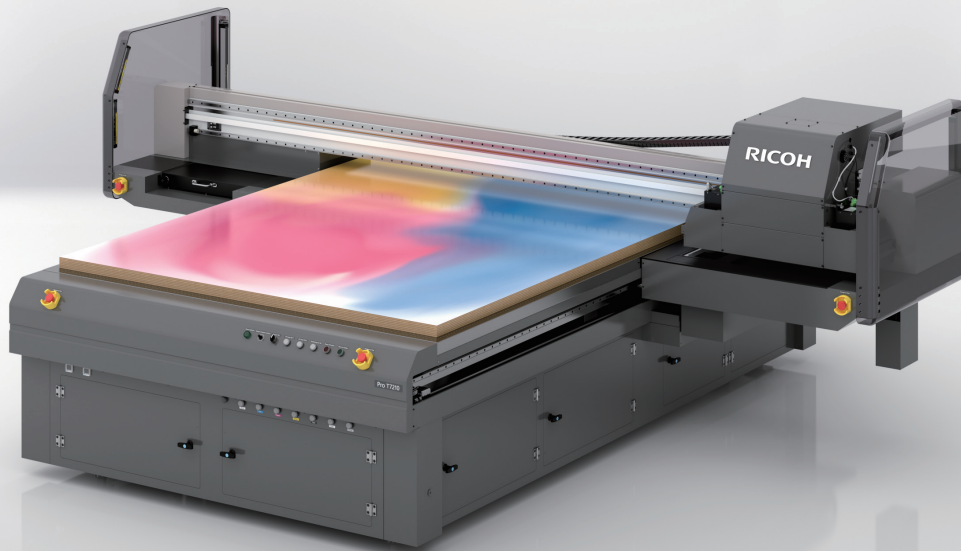
100 m<sup>2</sup>/h full  
in draft mode colour

# Up to **100** m<sup>2</sup>/h: High Productivity

in Draft mode 4C configuration

To support the most demanding production environments

The latest addition to the Ricoh range of large format printers



The new RICOH Pro T7210 UV Flatbed combines impressive print speed and excellent image quality. Built for productivity with customization capability and material versatility. The integrated vacuum table with pin registration makes handling and positioning of materials easy. Full bleed printing eliminates the need for trimming or cutting hence, reduce the finishing time.

## High Performance

### Up to a Maximum Speed of 100m<sup>2</sup>/h

The RICOH Pro T7210 has an impressive print speed of up to 100m<sup>2</sup>/h in 4C draft mode and 50m<sup>2</sup>/h in 4C standard mode. The system uses Ricoh's own highly acclaimed Piezo Multi-drop RICOH MH54 series print heads configured in three rows producing a resolution of 635 x 1,800 dpi enabling grey scale printing and exceptional print quality. \*Standard in-line inks are Cyan, Magenta, Yellow, Black, White, Clear and Primer.

MODE	VARIATIONS
4C	CMYK
5C	4C + W 4C + CL
6C	W+4C+CL

\*Primer ink available in each mode.

### Ricoh white ink expands the ability of designers

Printing white ink as a foundation colour layer on transparent or coloured materials helps retain the natural vividness of colours. Also three layered printing, which prints white ink between colours, shows images on both sides on transparent materials.



## High Quality

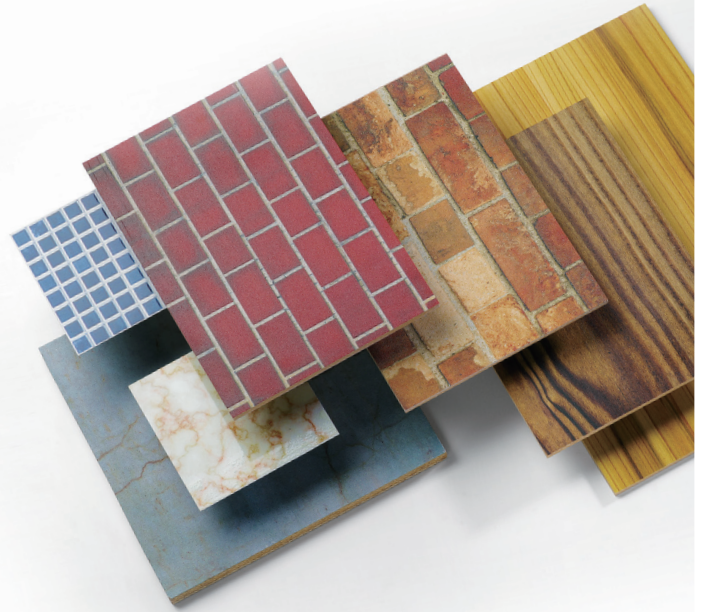
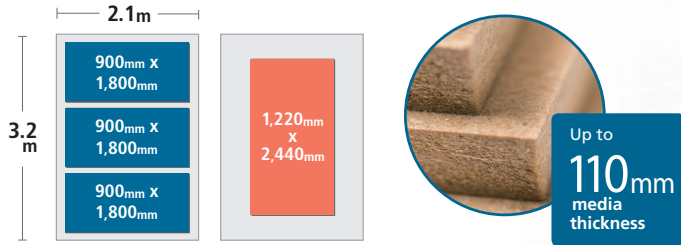
### High adhesion on to versatile media

Printing with high adhesion\* on to versatile media such as Acrylic, Glass, Wood, Aluminium, steel etc. \*Adhesion is evaluated by cross cut test. (JIS K5600-5-6)

## High Versatility

### Ability to handle various materials and sizes Up to 110mm media thickness

The max printing area of 2.1m x 3.2m will accommodate three sheets of 900mm x 1,800mm or a single sheet up to 1,220mm x 2,440mm 110mm thickness.



### Wood, glass, metal and so on Print to versatile applications

Ricoh's specially formulated UV ink is designed to meet the wide range of customer requirements in decoration. The ink is flexible with excellent adhesion suitable for post processing, shaping and bending into its final design.

## Ease of Use

### Multi zone vacuum system

The flatbed is divided into 8 areas. Each area has a variable vacuum switch to control suction, eliminating the need for masking, which is conveniently located close to the operator.

### Front access maximises operator productivity

The RICOH Pro T7210 provides easy access for managing the ink tanks, which are located at the front of the system.



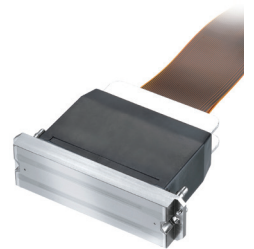
### Ioniser function

The ioniser function helps to create more accurate positioning of the jetting by reducing static electricity on the surface leading to better print quality.

## RICOH Technology

### Highly reliable RICOH print head

RICOH inkjet print heads are made of stainless steel, offering excellent durability and extended service life. The multi-drop capability allows the creation of a range of drop sizes enabling grey-scale printing.



### High-quality image processing technology

RICOH technology offers jetting accuracy, high print quality, high resolution and high reliability.

### Newly developed UV ink and LED lamps

RICOH UV ink has high adhesion properties for performance on a wide range of rigid industrial materials. LED is both energy saving and has a longer life resulting in less downtime to change parts.

## High Reliability

### RICOH technology offering high durability

The combination of our own printhead technology, long experience in image processing and in-house developed ink realized high durability.

### Easy maintenance

Daily operator routines to keep the print heads clean are eliminated by the automatic wiper system on the RICOH Pro T7210.



# RICOH Pro T7210

## SYSTEM SPECIFICATIONS

### RICOH Pro T7210

Model name	RICOH Pro T7210	
Type	True flatbed	
Print method	UV Inkjet	
Head type	RICOH MH54SERIES	
The number of inkjet heads	12	
Resolution	MAX : 635 x 1,800dpi	
Ink type	RICOH UV ink	
Ink	CMYKW, Clear and Primer	
Curing method	LED	
Ink bottle capacity	CMYK and Clear	1 L for each
	White	850 ml
	Primer	1 L
Ink capacity of Machine	2.5 L per colour	
Print mode	4C, 5C, 6C + Primer	
Print Speed 4C mode(CMYK)	Draft	102.8 m <sup>2</sup> /h
	Production	66.8 m <sup>2</sup> /h
	Standard	50.1 m <sup>2</sup> /h
	High Quality	17.1 m <sup>2</sup> /h
Print Speed 5C mode(4C+W)	Draft	31.8 m <sup>2</sup> /h
	Production	21.1 m <sup>2</sup> /h
	Standard	16.0 m <sup>2</sup> /h
	High Quality	5.4 m <sup>2</sup> /h
Print Speed 4C+Clear 4C+Primer	Draft	31.8 m <sup>2</sup> /h
	Production	10.6 m <sup>2</sup> /h
	Standard	8.0 m <sup>2</sup> /h
	High Quality	4.1 m <sup>2</sup> /h
Media	Rigid materials : ACRYLIC, PETG, PC, PVC, GLASS, ALUMINIUM, STEEL, WOOD, MDF etc.	
Max printing size (W x D)	2,100mm x 3,200mm	
Media	Max size	2,110mm x 3,210mm
	Thickness	110mm
	Weight	45kg/m <sup>2</sup>
	Roll option	N/A
Interface	USB 3.0	
Colour Rips	SAi Photo Print	

Dimensions	Width	4,410mm
	Depth	3,860mm
	Height	1,600mm
Machine weight	Under 2,150kg	
Vacuum area	Up to 8 sections	
Power Supply	EMEA/Asia 25Amp 3-phase 380-415V NA/JPN 32Amp 3-phase 200-240V	

### PC specifications

#### Printer control software

Windows® Operating System	Windows® 10 / 7 (64bit)
CPU	Intel® Core™ i5 2GHz or more recommended
RAM	4GB or more recommended
Screen Resolution	1,152 x 854 minimum, with 16-bit colour or higher

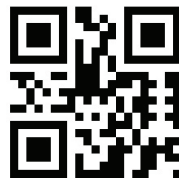
#### SAi Flexi Print DX (In bundle with RICOH Pro T7210)

Windows® Operating System	Windows® 10 / 8 / 7
RAM	1GB Minimum, 4GB or more recommended
Screen Resolution	1,152 x 854 minimum, with 16-bit colour or higher
Install Space	1GB free for base program plus extra install space for ICC Profiles Working Disk Space 4GB



**RICOH**  
imagine. change.

RICOH (MALAYSIA) SDN BHD  
Lock + Store, Level 1 & 3, No.5, Jalan Penyair U1/44  
Off Jalan Glenmarie, 40150 Shah Alam,  
Selangor Darul Ehsan, Malaysia.  
Hotline: 1300 88 8228



[www.ricoh.com.my](http://www.ricoh.com.my)

All brand and/or product names are trademarks of their respective owners. Specifications and external appearance are subject to change without notice. The colour of the actual product may vary from the colour shown in the brochure. The images in this brochure are not real photographs and slight differences in detail might appear. Copyright © 2017 Ricoh Asia Pacific Pte Ltd. All rights reserved. This brochure, its contents and/or layout may not be modified and/or adapted, copied in part or in whole and/or incorporated into other works without the prior written permission of Ricoh Asia Pacific Pte Ltd.